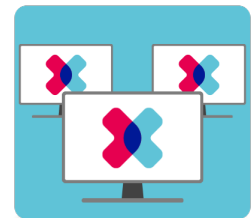


Multi Entity Management MASTER DATA MANAGEMENT WITH MULTI-ENVIRONMENT REPLICATION AND CONSOLIDATION

Designed for Microsoft Dynamics 365 Business Central

With Multi Entity Management you can easily replicate data from one company to another with real-time updates on insertion, modification, and deletion of data. The data can be managed for companies in the same or other environments.



Free trial

KEY BENEFITS

- Cross database and internal database replication of all tables in Business Central – custom and standard.
- Easy configuration of who should own the master data and how much flexibility you want to give the subscribers – down to field level.
- Push and pull records from the master company.
- Great tool to consolidate all your entries from the entire group in a reporting company on more than G/L entries.
- Advanced and intelligent handling of currency in groups with companies with different currency.
- Association of tables to ensure to only replicate the needed records – fx only the Item Posting Group that is relevant for the Items replicated to the company.

USAGE SCENARIOS

Master Data Manager

- Ease the manual work exporting and importing data during a migration by activating Multi Entity Management in the old and new company. Supporting from NAV 2017 and all version of Business Central
- Centralize creation of important data like chart of accounts, customer, vendors, customers but you could also include setup tables to ensure no one is modifying the core setup other than the responsible.
- Limit the struggle about defining detailed permission sets and let Multi Entity Management control which values the users in the different companies can modify and insert.
- Create new companies with a few clicks – just create the company and assign it to a replication scheme and the company will have all the data you want.
- The obvious use case will of course always be replication from one master company down to multiple subscribing companies.
- Consolidation of transactional entries from multiple companies. Comprehensive PowerBI report package gives you a full overview of the group's figures in one report.

REQUIREMENTS

- Microsoft Dynamics 365 Business Central.

TRY IT FOR FREE OR BOOK AN ONLINE DEMO

Try Multi Entity Management out for free the 30 next days. Download Multi Entity Management from appsource.microsoft.com and start testing.

Book an online demo to see the functionality of the Multi Entity Management.

[Book demo](#)